

Improved Water Shedding Helps Eliminate Belt Slippage and Boosts Productivity

And it installs in a fraction of the time required for conventional lagging. That's because Flex-Lag® installation does not require removing the pulley from the conveyor system! A labor-saving cold vulcanization process makes on-site installation fast, simple, and efficient.



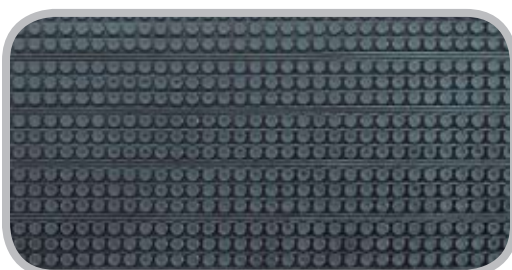
Flex-Lag® Diamond-Pattern Rubber Lagging

Constructed from high durometer rubber for abrasion resistance. The Flex-Lag® Diamond pattern is based on rain tire tread designs for superior water-shedding characteristics. Helps keep belt slippage to the absolute minimum.



Flex-Lag® Plain-Pattern Lagging

Helps prevent belt slippage in extremely dirty environments. Rubber flexes during use to shed excess materials and prevent material build-up as well as premature belt and pulley wear. Horizontal grooves trap and deflect water, resulting in a coefficient of friction superior to plain-sheet lagging.



Flex-Lag® Light-Duty Lagging

Specially designed for pulleys with diameters as small as 2" (50 mm). Moisture is channeled between small raised buttons that support and grip the belt and deliver superior traction.

How to determine the proper quantity of Flex-Lag® material for the application.

Step 1: Measure the diameter of your pulley.

Step 2: See Strip Selection Chart to determine the number of strips you will need to lay lengthwise across the pulley.

Step 3: Choose the material and pattern best suited to your application.

Step 4: Determine the number of rolls required to cover pulley face:

A. Determine Length of Strip

For Light-Duty and

Plain-Pattern Lagging:

Pulley face plus 2" (50 mm)

For Diamond-Pattern Lagging:

Pulley face plus 4" (100 mm)

B. Calculate Strips per Roll

For Light-Duty Lagging:

129" (3.3 M) ÷ length of strip

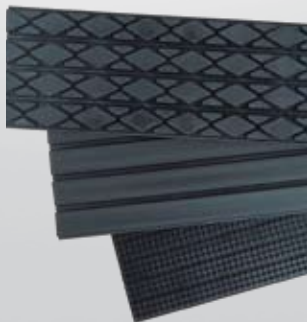
For Diamond-Pattern and

Plain-Pattern Lagging:

252" (6.5 M) ÷ length of strip

C. Number of Rolls Required

Number of strips required ÷ strips per roll



FLEX-LAG® RUBBER

Pulley Lagging

Strip Selection Chart		
Pulley Diameter		Strips Required
in.	mm	
12.0 to 12.5	305 to 319	5
12.6 to 15.0	320 to 381	6
15.1 to 17.5	382 to 445	7
17.6 to 20.0	446 to 510	8
20.1 to 22.5	511 to 573	9
22.6 to 25.0	574 to 636	10
25.1 to 27.5	637 to 700	11
27.6 to 30.0	701 to 764	12
30.1 to 32.5	765 to 826	13
32.6 to 35.1	827 to 891	14
35.2 to 37.6	892 to 955	15
37.7 to 40.1	956 to 1018	16
40.2 to 42.6	1019 to 1082	17
42.7 to 45.1	1083 to 1145	18
45.2 to 47.6	1146 to 1210	19
47.7 to 50.1	1212 to 1273	20
50.2 to 52.6	1275 to 1336	21
52.7 to 55.1	1339 to 1400	22
55.2 to 57.6	1403 to 1463	23
57.7 to 60.1	1466 to 1527	24
60.2 to 62.6	1529 to 1590	25
62.7 to 65.1	1593 to 1654	26
65.2 to 67.6	1656 to 1717	27
67.7 to 70.1	1720 to 1781	28
70.2 to 72.7	1783 to 1847	29

Coefficients of Friction (Pressure on surface 3 kg/CM(2) V=50 M/Min.)	
Condition	Grooved Rubber
Dry	0.4 to 0.5
Wet	0.23 to 0.26
Wet with Mud	0.18 to 0.22

Note: a dry, bare steel or iron pulley has a coefficient of friction of approximately .25

Diamond-Pattern and Plain-Pattern Rubber Flex-Lag® are available pre-buffed in both natural rubber and in flame-resistant anti-static rubber for applications where additional resistance to fire or oils is desired.

Flex-Lag Rubber Pulley Lagging is manufactured and packaged in 21' (6.5 M) rolls, 7.875" (200 mm) wide.

Ordering Information			
Flex-Lag® Natural Rubber			
Pattern	Thickness		Ordering Number
	in.	mm	
Diamond	13/32	10	10ND
	15/32	12	12ND
	19/32	15	15ND
	25/32	20	20ND
Plain	13/32	10	10NP
	15/32	12	12NP

Ordering Information			
Flex-Lag® Flame-Resistant Rubber			
Pattern	Thickness		Ordering Number
	in.	mm	
Diamond	13/32	10	10FRD
	15/32	12	12FRD
	19/32	15	15FRD
	25/32	20	20FRD
Plain	13/32	10	10FRP
	15/32	12	12FRP

Ordering Information	
Flex-Lag® Light-Duty Rubber	
Description	Ordering Number
Black (SBR)	6BLD
White (nitrile)	6WLD

Authorized Distributor:



2525 Wisconsin Avenue • Downers Grove, IL 60515-4200 U.S.A.
Tel: (630)-971-0150 • Fax: (630)-971-1180 • E-mail: info@flexco.com • Web: www.flexco.com

Australia: 61-2-9680-3322 • China: 86-21-33528388 • England: 44-1274-600-942
Germany: 49-7428-9406-0 • Mexico: 52-55-5674-5326 • South Africa: 27-11-608-4180

